



Sanford County Public Works

Stormwater Infrastructure

Project Summary

Project Summary: Browns Island Road and Gum Tree Lane

Narrative Description of Project:

Project improved 2,307 L.F. of drainage system. Removed blockage from flowline by hand. Cleaned out 1,548 L.F. of outfall ditch and 759 L.F. of roadside ditch. Installed (2) bleeder pipes. Repaired washout. Cleaned out (1) catch basin. Jetted (3) driveway pipes. Handseeded for erosion control.

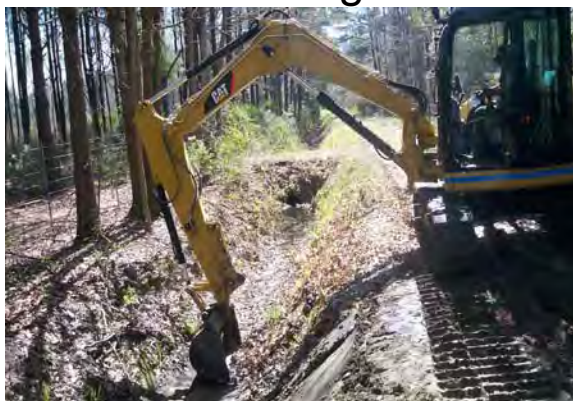
Completion: Apr-11

2011-610 / Browns Island Road and Gum Tree Lane	Labor Hours	Labor Cost	Equipment Cost	Material Cost	Contractor Cost	Indirect Labor	Total Cost
AUDIT / Audit Project	0.50	\$10.24	\$0.00	\$0.00	\$0.00	\$0.00	\$10.24
BPINST / Bleeder pipe - Installed	15.00	\$341.31	\$110.12	\$392.97	\$0.00	\$0.00	\$844.40
CBCO / Catch basin - clean out	4.00	\$85.66	\$44.32	\$36.70	\$0.00	\$0.00	\$166.68
COMP / Compile Project	2.00	\$40.96	\$0.00	\$0.00	\$0.00	\$0.00	\$40.96
DPJT / Driveway Pipe - Jetted	4.00	\$85.66	\$44.32	\$4.00	\$0.00	\$0.00	\$133.98
HAUL / Hauling	13.00	\$276.58	\$173.03	\$185.24	\$0.00	\$0.00	\$634.85
LM / Loading Materials	11.00	\$235.62	\$162.85	\$67.89	\$0.00	\$0.00	\$466.36
ODCO / Outfall ditch - cleaned out	53.50	\$1,232.61	\$360.26	\$141.82	\$0.00	\$0.00	\$1,734.69
RSDCL / Roadside Ditch - Cleanout	18.00	\$402.46	\$109.52	\$35.99	\$0.00	\$0.00	\$547.97
Indirect Labor, Services and Supplies	0.00	\$0.00	\$0.00	\$0.00	\$0.00	\$1,865.37	\$1,865.37
2011-610 / Browns Island Road and Gum Tree Lane Sub Total	121.00	\$2,711.10	\$1,004.42	\$864.62	\$0.00	\$1,865.37	\$6,445.51
Grand Total	121.00	\$2,711.10	\$1,004.42	\$864.62	\$0.00	\$1,865.37	\$6,445.51

Before



During



After



Project: Browns Island Road and Gum Tree Lane Map 1

Activity: Drainage Maintenance

Project #: 2011-610

Township: Sheldon

Completed: April 2011



Legend	
Drainage Type	
	River
	Stream
	Outfall
	Lateral
	Lateral Pipe
	Roadside
	Roadside Pipe
	Road Pipe
	Crossline
	D/W
	Access
	Piped
	Bleeder
	Parcels



1 inch = 344 feet

Project: Browns
Island Road and
Gum Tree Lane
Map 2

Activity: Drainage
Maintenance

Project #:
2011-610

Township:
Sheldon

Completed:
April 2011



Legend	
Drainage Type	
	River
	Stream
	Outfall
	Lateral
	Lateral Pipe
	Roadside
	Roadside Pipe
	Road Pipe
	Crossline
	D/W
	Access
	Piped
	Bleeder
	Parcels



1 inch = 222 feet